

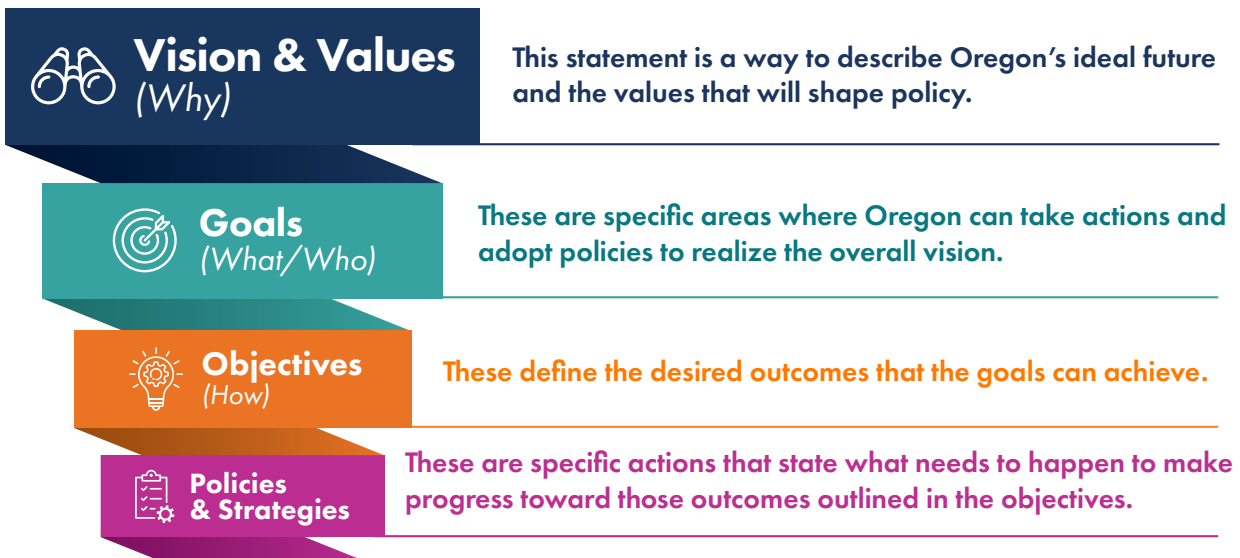


4. Vision and Values



4 Vision and Values

The OTP Vision describes the overarching intention of the state’s transportation system and a common purpose that all of Oregon can work toward.



4.1 Vision and Values Statement

Oregon’s transportation system supports all Oregonians by connecting people and goods to places in the most climate-friendly, equitable, and safe way. Users of the transportation system enjoy the following advancements:



Mobility

A multimodal transportation system enables a diverse population with different transportation needs to travel in the state safely and with minimal adverse impact on the natural environment. The most critical multimodal connections are complete, making it easier and safer for people to get around, especially near schools and commercial centers. Key routes in the state are well-maintained and reliable. The transportation system incorporates emerging transportation technologies into a multimodal transportation network so people experience seamless integration of Oregon’s public transportation system with priority active transportation connections. Oregon has a fully connected, efficient and safe transportation network.



Safety

People can get where they need and want to go safely. User needs and facility design are aligned, based on the context of the surrounding built environment. This allows agencies to design and manage the transportation system in a way that emphasizes safety over comfort or speed, while enabling technological solutions to mitigate effects of distracted driving and other safety challenges. There has been a significant decline in the number of people becoming seriously injured and dying in crashes, recognizing no loss of life is acceptable.



Sustainability and Climate Action

Oregon recognizes the climate crisis and makes systemic changes to reduce emissions caused by travel. Every mile driven in Oregon is powered by a clean source of fuel. Construction and maintenance operations are carbon neutral and investments in mobility support travel by low and no emission modes. The transportation system is resilient in the face of seismic and climate events and does not contribute to the degradation of the natural environment.



Economic Vitality and Livability

Transportation is not an end in itself, rather it enables people to connect with one another, make a living, visit beautiful places, and share goods. The transportation system provides opportunities for community and economic prosperity for everyone. Moving goods and materials is efficient and reliable, supporting commerce and creating jobs while keeping communities safe and clean. Tourism to Oregon's towns, cities, and beautiful natural wonders enriches lives and supports economies across the state.



Stewardship of Public Resources

Decision-making and transportation investments reflect the values of open decision-making, environmental stewardship, public health, safety, and thoughtful management of the transportation system. The public's assets are preserved and investments are well-managed. With reliable funding streams that have broad public support, federal, state, and local transportation agencies collaborate effectively and adaptively manage resources in the face of uncertainty.